

Bcl-2 ELISA

Enzyme immunoassay for the quantitative determination of human Bcl-2 in cell culture supernatants, human serum and plasma.

REF

BE51931



96



2-8 °C

EU: *For research use only.*

U.S.: *For research use only.
Not for use in diagnostic procedures.*



I B L I N T E R N A T I O N A L G M B H

Flughafenstrasse 52a
D-22335 Hamburg, Germany

Phone: +49 (0)40-53 28 91-0
Fax: +49 (0)40-53 28 91-11

IBL@IBL-International.com
www.IBL-International.com

TABLE OF CONTENTS

1	Intended Use	3
2	Summary	3
3	Principles of the Test	5
4	Reagents Provided	7
5	Storage Instructions – ELISA Kit	8
6	Specimen Collection and Storage Instructions	8
7	Materials Required But Not Provided	10
8	Precautions for Use	11
9	Preparation of Reagents	13
10	Test Protocol	18
11	Calculation of Results	23
12	Limitations	26
13	Performance Characteristics	27
14	Bibliography	32
15	Ordering Information	34
16	Reagent Preparation Summary	35
17	Test Protocol Summary	36

1 Intended Use

The human Bcl-2 ELISA is an enzyme-linked immunosorbent assay for the quantitative detection of human Bcl-2. **The human Bcl-2 ELISA is for research use only. Not for diagnostic or therapeutic procedures.**

2 Summary

Bcl-2 initiates a new gene family involved in the regulation of cell death and survival without affecting cell proliferation. This precise regulation and maintenance of balance between cell proliferation and cell death in multicellular organisms is critical for tissue homeostasis. Bcl-2, encoded by a proto-oncogene, is an intracellular membrane-associated protein that functions to block programmed cell death (6). Expression of Bcl-2 has been reported in a wide range of hematopoietic cells, nonneoplastic epithelia and epithelial malignancies. Bcl-2 levels are low or undetectable in endothelial cells.

The Bcl-2 gene has a unique function among mammalian oncogenes as a negative regulator of apoptosis (9). It was first discovered because of its involvement in chromosomal translocations commonly found in lymphomas (10). Bcl-2 is furthermore associated with stem cells committed to differentiation and morphogenesis.

A decrease in Bcl-2 levels leads to cell death by apoptosis. Overexpression of Bcl-2 on the other hand protects cells from death, but it is neither able to immortalize normal cells, nor to cause tumorigenic transformation of immortalized cells.

Heterogeneous expression of Bcl-2 in malignancies suggests that the gene is differentially regulated. Furthermore, its expression in association with precancerous lesions suggests a role in the early stage of tumorigenesis.

Several homologs of Bcl-2 have recently been discovered, some of which function as inhibitors of cell death and others as promoters of apoptosis that oppose the function of the Bcl-2 protein (4).

Bcl-2 protein plays a critical role in oncogenesis as well as resistance to therapy (10) of cancer. Furthermore prognostic significance of Bcl-2 expression has been shown for several malignancies such as Non-Hodgkin's Lymphoma (3), squamous cell carcinomas (11), breast carcinoma (1), carcinoma of the gallbladder (12), and thymoma (2). Dysregulated Bcl-2 expression has been shown in Multiple Myeloma patients (7) and in acute Myeloid leukemia (5). Bcl-2 has been suggested as a useful marker for adequate IL-2 therapy e.g. in AIDS patients (8).

3 Principles of the Test

An anti-human Bcl-2 coating antibody is adsorbed onto microwells.

Human Bcl-2 present in the sample or standard binds to antibodies adsorbed to the microwells. A biotin-conjugated anti-human Bcl-2 antibody is added and binds to human Bcl-2 captured by the first antibody.

Following incubation unbound biotin-conjugated anti-human Bcl-2 antibody is removed during a wash step. Streptavidin-HRP is added and binds to the biotin-conjugated anti-human Bcl-2 antibody.

Following incubation unbound Streptavidin-HRP is removed during a wash step, and substrate solution reactive with HRP is added to the wells.

Figure 1

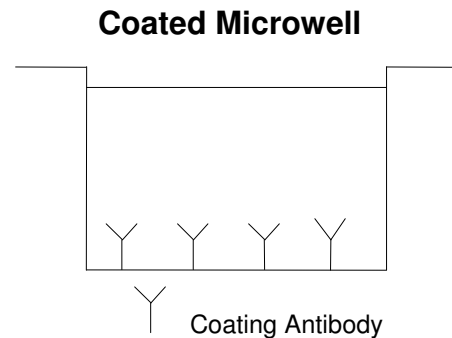


Figure 2

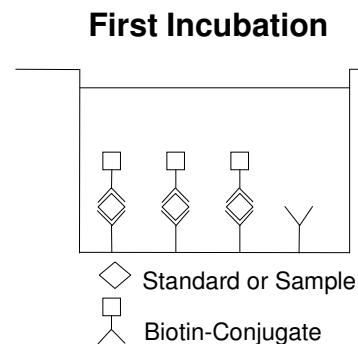


Figure 3

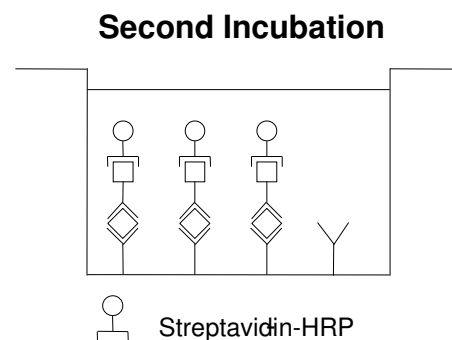
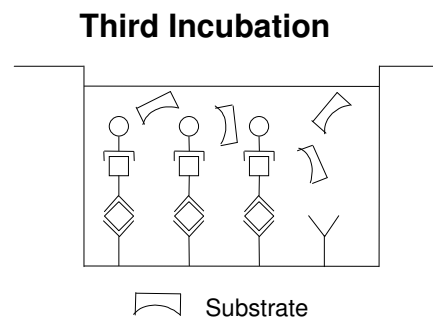
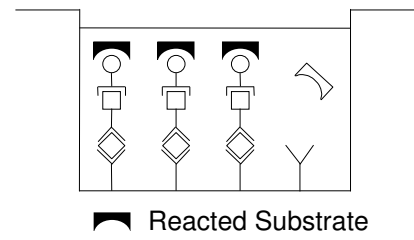


Figure 4



A coloured product is formed in proportion to the amount of human Bcl-2 present in the sample or standard. The reaction is terminated by addition of acid and absorbance is measured at 450 nm. A standard curve is prepared from 7 human Bcl-2 standard dilutions and human Bcl-2 sample concentration determined.

Figure 5



4 Reagents Provided

- 1 aluminium pouch with a **Microwell Plate coated** with monoclonal antibody to human Bcl-2
- 1 vial (100 µl) **Biotin-Conjugate** anti-human Bcl-2 monoclonal antibody
- 1 vial (150 µl) **Streptavidin-HRP**
- 2 vials human Bcl-2 **Standard** lyophilized, 64 ng/ml upon reconstitution
- 1 vial (12 ml) **Sample Diluent**
- 1 vial (5 ml) **Assay Buffer Concentrate** 20x (PBS with 1% Tween 20 and 10% BSA)
- 1 bottle (50 ml) **Wash Buffer Concentrate** 20x (PBS with 1% Tween 20)
- 1 bottle (15 ml) **Lysis Buffer** 10x
- 1 vial (15 ml) **Substrate Solution** (tetramethyl-benzidine)
- 1 vial (12 ml) **Stop Solution** (1M Phosphoric acid)
- 1 vial (0.4 ml) **Blue-Dye**
- 1 vial (0.4 ml) **Green-Dye**
- 1 vial (0.4 ml) **Red-Dye**
- 4 **Adhesive Films**

5 Storage Instructions – ELISA Kit

Store kit reagents between 2° and 8°C. Immediately after use remaining reagents should be returned to cold storage (2° to 8°C). Expiry of the kit and reagents is stated on labels.

Expiry of the kit components can only be guaranteed if the components are stored properly, and if, in case of repeated use of one component, this reagent is not contaminated by the first handling.

6 Specimen Collection and Storage Instructions

Cell lysates, serum and plasma were tested with this assay. Other biological samples might be suitable for use in the assay. Remove serum or plasma from the clot or cells as soon as possible after clotting and separation.

Pay attention to a possible “**Hook Effect**” due to high sample concentrations (see chapter 11).

Samples containing a visible precipitate must be clarified prior to use in the assay. Do not use grossly hemolyzed or lipemic specimens.

Samples should be aliquoted and must be stored frozen at -20°C to avoid loss of bioactive human Bcl-2. If samples are to be run within 24 hours, they may be stored at 2° to 8°C (for sample stability refer to 13.5).

Avoid repeated freeze-thaw cycles. Prior to assay, the frozen sample should be brought to room temperature slowly and mixed gently.

6.1 Sample Preparation – Cell Lysate Protocol

Numerous extraction protocols can be used. The following protocol is provided as an example of a suitable extraction procedure, but should not be construed as necessarily being the method of choice. Users may wish to experiment with extraction procedures that work best in their hands.

For suspension cells: Pellet by centrifugation, remove supernatant and proceed to Addition of Lysis Buffer.

For attached cells: Remove supernatant from cells, wash cells once with PBS, harvest cells by scraping and gentle centrifugation, aspirate PBS, leaving an intact cell pellet (at this point the cell pellet can be frozen at -80 °C and lysed at a later date) and proceed to Addition of Lysis Buffer. Addition of Lysis Buffer: Resuspend the pellet in Lysis Buffer (1x) (we recommend a concentration of 5×10^6 cells/ml.), incubate 60 minutes at room temperature with gentle shaking and transfer extracts to microcentrifuge tubes and centrifuge at 1000 x g for 15 minutes. Aliquot the cleared lysate to clean microfuge tubes and continue the test procedure (Alternatively lysates can be stored at -80 °C and assayed at a later time. Divide lysates into small aliquots to avoid multiple freeze/thaw cycles.).

7 Materials Required But Not Provided

- 5 ml and 10 ml graduated pipettes
- 5 μ l to 1000 μ l adjustable single channel micropipettes with disposable tips
- 50 μ l to 300 μ l adjustable multichannel micropipette with disposable tips
- Multichannel micropipette reservoir
- Beakers, flasks, cylinders necessary for preparation of reagents
- Device for delivery of wash solution (multichannel wash bottle or automatic wash system)
- Microwell strip reader capable of reading at 450 nm (620 nm as optional reference wave length)
- Glass-distilled or deionized water
- Statistical calculator with program to perform regression analysis

8 Precautions for Use

- All chemicals should be considered as potentially hazardous. We therefore recommend that this product is handled only by those persons who have been trained in laboratory techniques and that it is used in accordance with the principles of good laboratory practice. Wear suitable protective clothing such as laboratory overalls, safety glasses and gloves. Care should be taken to avoid contact with skin or eyes. In the case of contact with skin or eyes wash immediately with water. See material safety data sheet(s) and/or safety statement(s) for specific advice.
- Reagents are intended for research use only and are not for use in diagnostic or therapeutic procedures.
- Do not mix or substitute reagents with those from other lots or other sources.
- Do not use kit reagents beyond expiration date on label.
- Do not expose kit reagents to strong light during storage or incubation.
- Do not pipette by mouth.
- Do not eat or smoke in areas where kit reagents or samples are handled.
- Avoid contact of skin or mucous membranes with kit reagents or specimens.
- Rubber or disposable latex gloves should be worn while handling kit reagents or specimens.
- Avoid contact of substrate solution with oxidizing agents and metal.
- Avoid splashing or generation of aerosols.
- In order to avoid microbial contamination or cross-contamination of reagents or specimens which may invalidate the test use disposable pipette tips and/or pipettes.
- Use clean, dedicated reagent trays for dispensing the conjugate and substrate reagent.

- Exposure to acid inactivates the conjugate.
- Glass-distilled water or deionized water must be used for reagent preparation.
- Substrate solution must be at room temperature prior to use.
- Decontaminate and dispose specimens and all potentially contaminated materials as they could contain infectious agents. The preferred method of decontamination is autoclaving for a minimum of 1 hour at 121.5°C.
- Liquid wastes not containing acid and neutralized waste may be mixed with sodium hypochlorite in volumes such that the final mixture contains 1.0% sodium hypochlorite. Allow 30 minutes for effective decontamination. Liquid waste containing acid must be neutralized prior to the addition of sodium hypochlorite.

9 Preparation of Reagents

Buffer concentrates should be brought to room temperature and should be diluted before starting the test procedure.

9.1 Wash Buffer

If crystals have formed in the **Wash Buffer Concentrate** (20x), warm it gently until they have completely dissolved.

Pour entire contents (50 ml) of the Wash Buffer Concentrate (20x) into a clean 1000 ml graduated cylinder. Bring to final volume of 1000 ml with glass-distilled or deionized water. Mix gently to avoid foaming. The pH of the final solution should adjust to 7.4.

Transfer to a clean wash bottle and store at 2° to 25°C. Please note that Wash Buffer is stable for 30 days.

Wash Buffer may also be prepared as needed according to the following table:

Number of Strips	Wash Buffer Concentrate (20x) (ml)	Distilled Water (ml)
1 - 6	25	475
1 - 12	50	950

9.2 Assay Buffer (1x)

Pour the entire contents (5 ml) of the **Assay Buffer Concentrate** (20x) into a clean 100 ml graduated cylinder. Bring to final volume of 100 ml with distilled water. Mix gently to avoid foaming.

Store at 2° to 8°C. Please note that the Assay Buffer (1x) is stable for 30 days.

Assay Buffer (1x) may also be prepared as needed according to the following table:

Number of Strips	Assay Buffer Concentrate (20x) (ml)	Distilled Water (ml)
1 - 6	2.5	47.5
1 - 12	5.0	95.0

9.3 Lysis Buffer

Pour the entire contents (15 ml) of the **Lysis Buffer Concentrate** (10x) into a clean 150 ml graduated cylinder. Bring to final volume of 150 ml with distilled or deionized water and mix gently. Store at room temperature. Please note that the Lysis Buffer is stable for 30 days.

9.4 Biotin-Conjugate

Please note that the Biotin-Conjugate should be used within 30 minutes after dilution.

Make a 1:100 dilution of the concentrated **Biotin-Conjugate** solution with Assay Buffer (1x) in a clean plastic tube as needed according to the following table:

Number of Strips	Biotin-Conjugate (ml)	Assay Buffer (1x) (ml)
1 - 6	0.03	2.97
1 - 12	0.06	5.94

9.5 Streptavidin-HRP

Please note that the Streptavidin-HRP should be used within 30 minutes after dilution.

Make a 1:100 dilution of the concentrated **Streptavidin-HRP** solution with Assay Buffer (1x) in a clean plastic tube as needed according to the following table:

Number of Strips	Streptavidin-HRP (ml)	Assay Buffer (1x) (ml)
1 - 6	0.06	5.94
1 - 12	0.12	11.88

9.6 Human Bcl-2 Standard

Reconstitute **human Bcl-2 standard** by addition of distilled water. Reconstitution volume is stated on the label of the standard vial. Swirl or mix gently to insure complete and homogeneous solubilization (concentration of reconstituted standard = 64 ng/ml).

After usage remaining standard cannot be stored and has to be discarded.

Standard dilutions can be prepared directly on the microwell plate (see 10.d) or alternatively in tubes (see 9.6.1).

9.6.1 External Standard Dilution

Label 7 tubes, one for each standard point.

S1, S2, S3, S4, S5, S6, S7

Then prepare 1:2 serial dilutions for the standard curve as follows:
Pipette 225 µl of Sample Diluent into each tube.

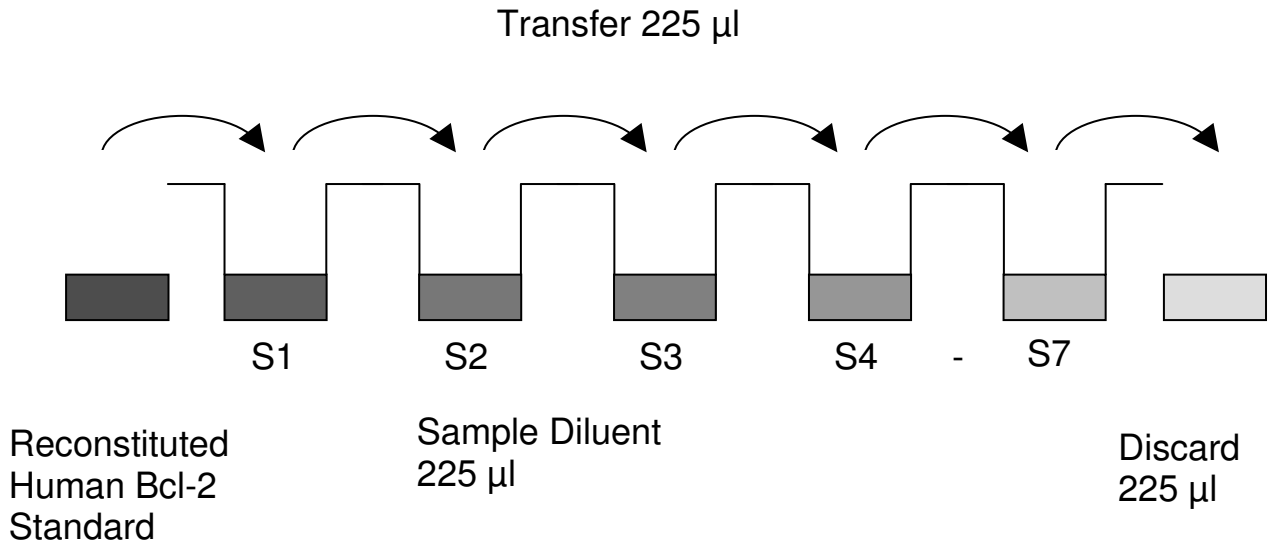
Pipette 225 µl of reconstituted standard (concentration = 64 ng/ml) into the first tube, labelled S1, and mix (concentration of standard 1 = 32 ng/ml).

Pipette 225 μ l of this dilution into the second tube, labelled S2, and mix thoroughly before the next transfer.

Repeat serial dilutions 5 more times thus creating the points of the standard curve (see Figure 6).

Sample Diluent serves as blank.

Figure 6



9.7 Addition of Colour-giving Reagents: Blue-Dye, Green-Dye, Red-Dye

In order to help our customers to avoid any mistakes in pipetting the IBL-International ELISAs, IBL-International offers a tool that helps to monitor the addition of even very small volumes of a solution to the reaction well by giving distinctive colours to each step of the ELISA procedure.

This procedure is optional, does not in any way interfere with the test results, and is designed to help the customer with the performance of the test, but can also be omitted, just following the instruction booklet.

Alternatively, the dye solutions from the stocks provided (**Blue-Dye, Green-Dye, Red-Dye**) can be added to the reagents according to the following guidelines:

1. **Diluent:** Before standard and sample dilution add the **Blue-Dye** at a dilution of 1:250 (see table below) to the appropriate diluent (1x) according to the test

protocol. After addition of **Blue-Dye**, proceed according to the instruction booklet.

5 ml Sample Diluent	20 μ l Blue-Dye
12 ml Sample Diluent	48 μ l Blue-Dye
50 ml Sample Diluent	200 μ l Blue-Dye

2. Biotin-Conjugate: Before dilution of the concentrated Biotin-Conjugate, add the **Green-Dye** at a dilution of 1:100 (see table below) to the Assay Buffer (1x) used for the final conjugate dilution. Proceed after addition of **Green-Dye** according to the instruction booklet: Preparation of Biotin-Conjugate.

3 ml Assay Buffer (1x)	30 μ l Green-Dye
6 ml Assay Buffer (1x)	60 μ l Green-Dye

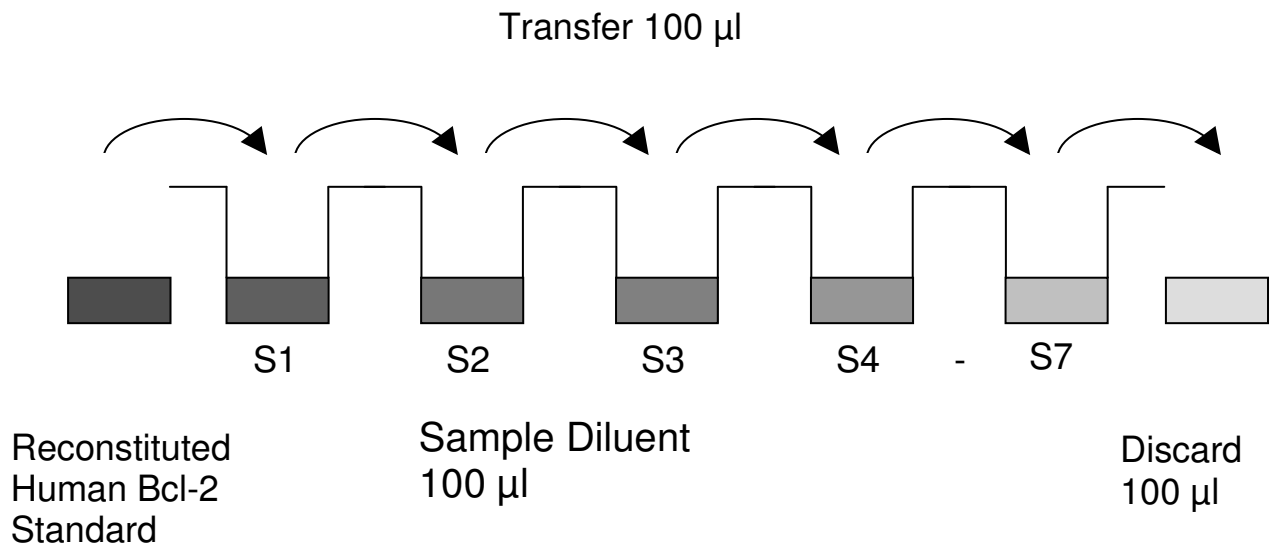
3. Streptavidin-HRP: Before dilution of the concentrated Streptavidin-HRP, add the **Red-Dye** at a dilution of 1:250 (see table below) to the Assay Buffer (1x) used for the final Streptavidin-HRP dilution. Proceed after addition of **Red-Dye** according to the instruction booklet: Preparation of Streptavidin-HRP.

6 ml Assay Buffer (1x)	24 μ l Red-Dye
12 ml Assay Buffer (1x)	48 μ l Red-Dye

10 Test Protocol

- a. For cell lysis follow the cell lysate protocol (see 6.1 Sample Preparation – Cell Lysate Protocol):
- b. Determine the number of microwell strips required to test the desired number of samples plus appropriate number of wells needed for running blanks and standards. Each sample, standard, blank and optional control sample should be assayed in duplicate. Remove extra microwell strips from holder and store in foil bag with the desiccant provided at 2°-8°C sealed tightly.
- c. Wash the microwell strips twice with approximately 400 µl **Wash Buffer** per well with thorough aspiration of microwell contents between washes. Allow the Wash Buffer to sit in the wells for about **10 – 15 seconds** before aspiration. Take care not to scratch the surface of the microwells.
After the last wash step, empty wells and tap microwell strips on absorbent pad or paper towel to remove excess Wash Buffer. Use the microwell strips immediately after washing. Alternatively microwell strips can be placed upside down on a wet absorbent paper for not longer than 15 minutes. **Do not allow wells to dry.**
- d. **Standard dilution on the microwell plate** (Alternatively the standard dilution can be prepared in tubes - see 9.6.1):
Add 100 µl of Sample Diluent in duplicate to all **standard wells**.
Pipette 100 µl of prepared **standard** (see Preparation of Standard 9.6, concentration = 64 ng/ml) in duplicate into well A1 and A2 (see Table 1). Mix the contents of wells A1 and A2 by repeated aspiration and ejection (concentration of standard 1, S1 = 32 ng/ml), and transfer 100 µl to wells B1 and B2, respectively (see Figure 7). Take care not to scratch the inner surface of the microwells. Continue this procedure 5 times, creating two rows of human Bcl-2 standard dilutions ranging from 32.0 to 0.5 ng/ml. Discard 100 µl of the contents from the last microwells (G1, G2) used.

Figure 7



In case of an **external standard dilution** (see 9.6.1), pipette 100 μ l of these standard dilutions (S1 - S7) in the standard wells according to Table 1.

Table 1

Table depicting an example of the arrangement of blanks, standards and samples in the microwell strips:

	1	2	3	4
A	Standard 1 (32.0 ng/ml)	Standard 1 (32.0 ng/ml)	Sample 1	Sample 1
B	Standard 2 (16.0 ng/ml)	Standard 2 (16.0 ng/ml)	Sample 2	Sample 2
C	Standard 3 (8.0 ng/ml)	Standard 3 (8.0 ng/ml)	Sample 3	Sample 3
D	Standard 4 (4.0 ng/ml)	Standard 4 (4.0 ng/ml)	Sample 4	Sample 4
E	Standard 5 (2.0 ng/ml)	Standard 5 (2.0 ng/ml)	Sample 5	Sample 5
F	Standard 6 (1.0 ng/ml)	Standard 6 (1.0 ng/ml)	Sample 6	Sample 6
G	Standard 7 (0.5 ng/ml)	Standard 7 (0.5 ng/ml)	Sample 7	Sample 7
H	Blank	Blank	Sample 8	Sample 8

- e. Add 100 µl of **Sample Diluent** in duplicate to the **blank wells**.
- f. Add 80 µl of **Sample Diluent** to the **sample wells**.
- g. Add 20 µl of each **sample** in duplicate to the **sample wells**.
- h. Prepare **Biotin-Conjugate** (see Preparation of Biotin-Conjugate 9.4).
- i. Add 50 µl of **Biotin-Conjugate** to all wells.
- j. Cover with an adhesive film and incubate at room temperature (18 to 25 °C) for 2 hours, if available on a microplate shaker set at 100 rpm.
- k. Prepare **Streptavidin-HRP** (refer to Preparation of Streptavidin-HRP 9.5).
- l. Remove adhesive film and empty wells. **Wash** microwell strips 3 times according to point c. of the test protocol. Proceed immediately to the next step.
- m. Add 100 µl of diluted **Streptavidin-HRP** to all wells, including the blank wells.
- n. Cover with an adhesive film and incubate at room temperature (18° to 25 °C) for 1 hour, if available on a microplate shaker set at 100 rpm.
- o. Remove adhesive film and empty wells. **Wash** microwell strips 3 times according to point c. of the test protocol. Proceed immediately to the next step.
- p. Pipette 100 µl of **TMB Substrate Solution** to all wells.
- q. Incubate the microwell strips at room temperature (18° to 25 °C) for about 10 min. Avoid direct exposure to intense light.

The colour development on the plate should be monitored and the substrate reaction stopped (see next point of this protocol) before positive wells are no longer properly recordable. Determination of the ideal time period for colour development has to be done individually for each assay.

It is recommended to add the stop solution when the highest standard has developed a dark blue colour. Alternatively the colour development can be monitored by the ELISA reader at 620 nm. The

substrate reaction should be stopped as soon as Standard 1 has reached an OD of 0.6 – 0.65.

- r. Stop the enzyme reaction by quickly pipetting 100 μ l of **Stop Solution** into each well. It is important that the Stop Solution is spread quickly and uniformly throughout the microwells to completely inactivate the enzyme. Results must be read immediately after the Stop Solution is added or within one hour if the microwell strips are stored at 2 - 8°C in the dark.
- s. Read absorbance of each microwell on a spectro-photometer using 450 nm as the primary wave length (optionally 620 nm as the reference wave length; 610 nm to 650 nm is acceptable). Blank the plate reader according to the manufacturer's instructions by using the blank wells. Determine the absorbance of both the samples and the standards.

Note: In case of incubation without shaking the obtained O.D. values may be lower than indicated below. Nevertheless the results are still valid.

11 Calculation of Results

- Calculate the average absorbance values for each set of duplicate standards and samples. Duplicates should be within 20 per cent of the mean value.
- Create a standard curve by plotting the mean absorbance for each standard concentration on the ordinate against the human Bcl-2 concentration on the abscissa. Draw a best fit curve through the points of the graph (a 5-parameter curve fit is recommended).
- To determine the concentration of circulating human Bcl-2 for each sample, first find the mean absorbance value on the ordinate and extend a horizontal line to the standard curve. At the point of intersection, extend a vertical line to the abscissa and read the corresponding human Bcl-2 concentration.
- **If instructions in this protocol have been followed samples have been diluted 1:5 (20 µl sample + 80 µl Sample Diluent), the concentration read from the standard curve must be multiplied by the dilution factor (x 5).**
- **Calculation of samples with a concentration exceeding standard 1 may result in incorrect, low human Bcl-2 levels (Hook Effect). Such samples require further external predilution according to expected human Bcl-2 values with Sample Diluent in order to precisely quantitate the actual human Bcl-2 level.**
- It is suggested that each testing facility establishes a control sample of known human Bcl-2 concentration and runs this additional control with each assay. If the values obtained are not within the expected range of the control, the assay results may be invalid.
- A representative standard curve is shown in Figure 8. This curve cannot be used to derive test results. Each laboratory must prepare a standard curve for each group of microwell strips assayed.

Figure 8

Representative standard curve for human Bcl-2 ELISA. Human Bcl-2 was diluted in serial 2-fold steps in Sample Diluent. Do not use this standard curve to derive test results. A standard curve must be run for each group of microwell strips assayed.

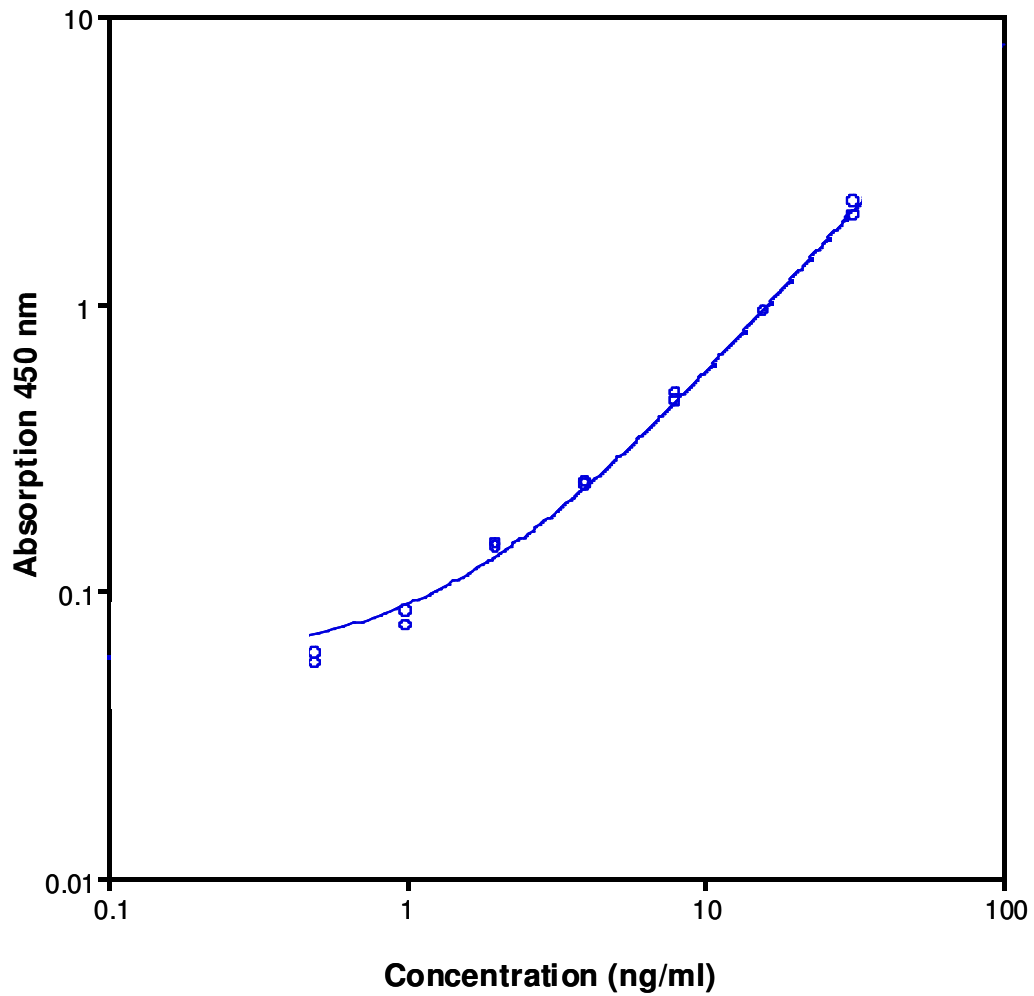


Table 2

Typical data using the human Bcl-2 ELISA

Measuring wavelength: 450 nm

Reference wavelength: 620 nm

Standard	Human Bcl-2 Concentration (ng/ml)	O.D. at 450 nm	Mean O.D. at 450 nm	C.V. (%)
1	32.0	2.248	2.128	5.7
	32.0	2.007		
2	16.0	0.937	0.939	0.2
	16.0	0.940		
3	8.0	0.453	0.468	3.2
	8.0	0.483		
4	4.0	0.231	0.236	1.9
	4.0	0.240		
5	2.0	0.141	0.143	1.4
	2.0	0.145		
6	1.0	0.075	0.080	5.7
	1.0	0.084		
7	0.5	0.060	0.058	3.4
	0.5	0.056		
Blank	0	0.018	0.018	
	0	0.018		

The OD values of the standard curve may vary according to the conditions of assay performance (e.g. operator, pipetting technique, washing technique or temperature effects). Furthermore shelf life of the kit may affect enzymatic activity and thus colour intensity. Values measured are still valid.

12 Limitations

- Since exact conditions may vary from assay to assay, a standard curve must be established for every run.
- Bacterial or fungal contamination of either screen samples or reagents or cross-contamination between reagents may cause erroneous results.
- Disposable pipette tips, flasks or glassware are preferred, reusable glassware must be washed and thoroughly rinsed of all detergents before use.
- Improper or insufficient washing at any stage of the procedure will result in either false positive or false negative results. Empty wells completely before dispensing fresh wash solution, fill with Wash Buffer as indicated for each wash cycle and do not allow wells to sit uncovered or dry for extended periods.
- The use of radioimmunotherapy has significantly increased the number of patients with human anti-mouse IgG antibodies (HAMA). HAMA may interfere with assays utilizing murine monoclonal antibodies leading to both false positive and false negative results. Serum samples containing antibodies to murine immunoglobulins can still be analysed in such assays when murine immunoglobulins (serum, ascitic fluid, or monoclonal antibodies of irrelevant specificity) are added to the sample.

13 Performance Characteristics

13.1 Sensitivity

The limit of detection of human Bcl-2 defined as the analyte concentration resulting in an absorbance significantly higher than that of the dilution medium (mean plus 2 standard deviations) was determined to be < 0.5 ng/ml (mean of 6 independent assays).

13.2 Reproducibility

13.2.1 Intra-assay

Reproducibility within the assay was evaluated in 3 independent experiments. Each assay was carried out with 6 replicates of 8 samples containing different concentrations of human Bcl-2. 2 standard curves were run on each plate. Data below show the mean human Bcl-2 concentration and the coefficient of variation for each sample (see Table 3). The calculated overall intra-assay coefficient of variation was 8.6%.

Table 3

The mean human Bcl-2 concentration and the coefficient of variation for each sample

Sample	Experiment	Mean Human Bcl-2 Concentration (ng/ml)	Coefficient of Variation (%)
1	1	87.9	5
	2	76.6	9
	3	64.3	4
2	1	63.4	7
	2	54.4	9
	3	47.9	9
3	1	54.0	14
	2	40.8	9
	3	40.0	14
4	1	44.0	11
	2	35.3	7
	3	34.8	12
5	1	42.0	4
	2	46.1	4
	3	53.8	9
6	1	16.0	10
	2	19.8	7
	3	16.7	10
7	1	7.4	6
	2	7.7	11
	3	8.3	10
8	1	5.0	11
	2	5.5	7
	3	5.3	7

13.2.2 Inter-assay

Assay to assay reproducibility within one laboratory was evaluated in 3 independent experiments. Each assay was carried out with 6 replicates of 8 samples containing different concentrations of human Bcl-2. 2 standard curves were run on each plate. Data below show the mean human Bcl-2 concentration and the coefficient of variation calculated on 18 determinations of each sample (see Table 4). The calculated overall inter-assay coefficient of variation was 12.0%.

Table 4

The mean human Bcl-2 concentration and the coefficient of variation of each sample

Sample	Mean Human Bcl-2 Concentration (ng/ml)	Coefficient of Variation (%)
1	75.3	15.8
2	55.2	14.0
3	44.8	17.7
4	38.0	13.5
5	47.3	12.6
6	17.5	11.6
7	7.8	5.9
8	5.3	5.1

13.3 Spike Recovery

The spike recovery was evaluated by spiking 4 levels of human Bcl-2 into lysis buffer. Recoveries were determined in 3 independent experiments with 4 replicates each.

The overall mean recovery was 71%.

13.4 Dilution Parallelism

4 samples with different levels of human Bcl-2 were analysed at serial 2 fold dilutions with 4 replicates each.

The recovery ranged from 85% to 123% with an overall recovery of 102% (see Table 5).

Table 5

Sample	Dilution	Expected Human Bcl-2 Concentration (ng/ml)	Observed Human Bcl-2 Concentration (ng/ml)	Recovery of Expected Human Bcl-2 Concentration (%)
1	1:5		81.7	
	1:10	40.9	34.5	85
	1:20	20.4	22.4	110
	1:40	10.2	11.3	111
2	1:5		50.3	
	1:10	25.2	23.3	92
	1:20	12.6	12.8	102
	1:40	6.3	6.4	102
3	1:5		138.0	
	1:10	69.0	75.6	110
	1:20	34.5	42.4	123
	1:40	17.3	19.6	113
4	1:5		113.5	
	1:10	56.8	53.3	94
	1:20	28.4	25.7	91
	1:40	14.2	13.0	92

13.5 Sample Stability

13.5.1 Freeze-Thaw Stability

Aliquots of samples were stored at -20 °C and thawed 5 times, and the human Bcl-2 levels determined. There was no significant loss of human Bcl-2 immunoreactivity detected by freezing and thawing.

13.5.2 Storage Stability

Aliquots of samples were stored at -20 °C, 2-8 °C, room temperature (RT) and at 37 °C, and the human Bcl-2 level determined after 24 h. There was no significant loss of human Bcl-2 immunoreactivity detected during storage at -20 °C. under above conditions. A significant loss of human Bcl-2 immunoreactivity was detected during storage at 4 °C (30%), at RT (45%) and 37 °C (70%) after 24 h.

14 Bibliography

- 1) Barbareschi M, Caffo O, Veronese S, Leek RD, Fina P, Fox S, Bonzanini M, Girlando S, Morelli L, Eccher C, Pezzella F, Doglioni C, Palma PD, Harris A. Bcl-2 and P53 expression in node-negative breast carcinoma – a study with long-term follow-up. *Human Pathology*. 27(11):1149-1155, 1996 Nov.
- 2) Chen FF, Yan JJ, Jin YT, Su IJ. Detection of Bcl-2 and P53 in thymoma – expression of Bcl-2 as a reliable marker of tumor aggressiveness. *Human Pathology*. 27(10):1089-1092, 1996 Oct.
- 3) Hill ME, Maclennan KA, Cunningham DC, Hudson BV, Burke M, Clarke P, Distefano F, Anderson L, Hudson GV, Mason D, Selby P, Linch DC. Prognostic significance of Bcl-2 expression and Bcl-2 major breakpoint region rearrangement in diffuse large cell non-Hodgkin's lymphoma – a British national lymphoma investigation study. *Blood*. 88(3):1046-1051, 1996 Aug. 1.
- 4) Karsan A, Yee E, Kaushansky K, Harlan JM. Cloning of a human Bcl-2 homologue – inflammatory cytokines induce human A1 in cultured endothelial cells. *Blood*. 87(8):3089-3096, 1996 Apr. 15.
- 5) Lisovsky M, Estrov Z, Zhang X, Consoli U, Sanchez-Williams G, Snell V, Munker R, Goodacre A, Savchenko V, Andreeff M. Flt3 ligand stimulates proliferation and inhibits apoptosis of acute myeloid leukemia cells: regulation of Bcl-2 and bax. *Amer. Soc. Hematol*. 88(10):3987-3997. 1996 Nov. 15.
- 6) Lu QL, Abel P, Foster CS, Lalani EN BCL-2-Role in epithelial differentiation and oncogenesis. *Human Pathology*. 27(2):102-110, 1996 Feb.
- 7) Massaia M, Borrione P, Attisano C, Barral P, Beggiato E, Montacchini L, Bianchi A, Boccadoro M, Pileri A. Dysregulated Fas and Bcl-2 expression leading to enhanced apoptosis in T cells of multiple myeloma patients. *Blood*. 85(12):3679-3687, 1995 June 15.
- 8) Mor F, Cohen IR. IL-2 rescues antigen-specific T cells from radiation or dexamethasone-induced apoptosis. *The Journal of Immunology*. 156:515-52, 1996.

- 9) Park JR, Hockenbery DM. BCL-2, a novel regulator of apoptosis. *Journal of Cellular Biochemistry*, 60(1):12-17, 1996 Jan.
- 10) Reed JC, Miyashita T, Takayama S, Wang HG, Sato T, Krajewski S, Aimesempe C, Bodrug S, Kitada S, Hanada M. BCL-2 family proteins – regulators of cell death involved in the pathogenesis of cancer and resistance to therapy. *Journal of Cellular Biochemistry*. 60(1):23-32, 1996 Jan.
- 11) Sarbia M, Bittinger F, Porschen R, Verreet P, Dutkowski P, Willers R, Gabbert HE. Bcl-2 expression and prognosis in squamous-cell carcinomas of the esophagus. *International Journal of Cancer*. 69(4):324-328, 1996 Aug. 22.
- 12) Sasatomi E, Tokunaga O, Miyazaki K. Spontaneous apoptosis in gallbladder carcinoma – relationships with clinicopathologic factors, expression of e-cadherin, Bcl-2 protooncogene, and P53 oncosuppressor gene. *Cancer*. 78(10):2101-2110, 1996 Nov.15.

15 Ordering Information

For orders please contact:

See last page

For technical information please contact:

e-mail: IBL@IBL-International.com
www.IBL-International.com

16 Reagent Preparation Summary

16.1 Wash Buffer

Add **Wash Buffer Concentrate** 20x (50 ml) to 950 ml distilled water.

Number of Strips	Wash Buffer Concentrate (ml)	Distilled Water (ml)
1 - 6	25	475
1 - 12	50	950

16.2 Assay Buffer (1x)

Add **Assay Buffer Concentrate** 20x (5 ml) to 95 ml distilled water.

Number of Strips	Assay Buffer Concentrate (ml)	Distilled Water (ml)
1 - 6	2.5	47.5
1 - 12	5.0	95.0

16.3 Lysis Buffer

Add **Lysis Buffer Concentrate** 10x (15 ml) to 135 ml distilled water.

16.4 Biotin-Conjugate

Make a 1:100 dilution of **Biotin-Conjugate** in Assay Buffer (1x):

Number of Strips	Biotin-Conjugate (ml)	Assay Buffer (1x) (ml)
1 - 6	0.03	2.97
1 - 12	0.06	5.94

16.5 Streptavidin-HRP

Make a 1:100 dilution of **Streptavidin-HRP** in Assay Buffer (1x):

Number of Strips	Streptavidin-HRP (ml)	Assay Buffer (1x) (ml)
1 - 6	0.06	5.94
1 - 12	0.12	11.88

16.6 Human Bcl-2 Standard


Reconstitute lyophilized **human Bcl-2 standard** with distilled water.
(Reconstitution volume is stated on the label of the standard vial.)

17 Test Protocol Summary

1. Prepare cell extracts according to the cell lysis protocol.
2. Determine the number of microwell strips required.
3. Wash microwell strips twice with Wash Buffer.
4. Standard dilution on the microwell plate: Add 100 µl Sample Diluent, in duplicate, to all standard wells. Pipette 100 µl prepared standard into the first wells and create standard dilutions by transferring 100 µl from well to well. Discard 100 µl from the last wells.
Alternatively external standard dilution in tubes (see 9.6.1): Pipette 100 µl of these standard dilutions in the microwell strips.
5. Add 100 µl Sample Diluent, in duplicate, to the blank wells.
6. Add 80 µl Sample Diluent to sample wells.
7. Add 20 µl sample in duplicate, to designated sample wells.
8. Prepare Biotin-Conjugate.
9. Add 50 µl Biotin-Conjugate to all wells.
10. Cover microwell strips and incubate 2 hours at room temperature (18° to 25°C).
11. Prepare Streptavidin-HRP.
12. Empty and wash microwell strips 3 times with Wash Buffer.
13. Add 100 µl diluted Streptavidin-HRP to all wells.
14. Cover microwell strips and incubate 1 hour at room temperature (18° to 25°C).
15. Empty and wash microwell strips 3 times with Wash Buffer.
16. Add 100 µl of TMB Substrate Solution to all wells.
17. Incubate the microwell strips for about 10 minutes at room temperature (18° to 25°C).
18. Add 100 µl Stop Solution to all wells.
19. Blank microwell reader and measure colour intensity at 450 nm.

Note: If instructions in this protocol have been followed samples have been diluted 1:5 (20 µl sample + 80 µl Sample Diluent), the concentration read from the standard curve must be multiplied by the dilution factor (x 5).

Symbols / Symbole / Symbôles / Símbolos / Símbolos / Σύμβολα

	Cat.-No.: / Kat.-Nr.: / No.- Cat.: / Cat.-No.: / N.º Cat.: / N.-Cat.: / Αριθμός-Κατ.:
	Lot-No.: / Chargen-Bez.: / No. Lot: / Lot-No.: / Lote N.º: / Lotto n.: / Αριθμός -Παραγωγή:
	Use by: / Verwendbar bis: / Utiliser à: / Usado por: / Usar até: / Da utilizzare entro: / Χρησιμοποιείται από:
	No. of Tests: / Kitgröße: / Nb. de Tests: / No. de Determ.: / N.º de Testes: / Quantità dei tests: / Αριθμός εξετάσεων:
	Concentrate / Konzentrat / Concentré / Concentrar / Concentrado / Concentrato / Συμπύκνωμα
	Lyophilized / Lyophilisat / Lyophilisé / Liofilizado / Liofilizado / Liofilizzato / Λυοφιλιασμένο
	In Vitro Diagnostic Medical Device. / In-vitro-Diagnostikum. / Appareil Médical pour Diagnostics In Vitro. / Dispositivo Médico para Diagnóstico In Vitro. / Equipamento Médico de Diagnóstico In Vitro. / Dispositivo Medico Diagnostico In vitro. / Ιατρική συσκευή για In-Vitro Διάγνωση.
	Evaluation kit. / Nur für Leistungsbewertungszwecke. / Kit pour évaluation. / Juego de Reactivos para Evaluació. / Kit de avaliação. / Kit di valutazione. / Κιτ Αξιολόγησης.
	Read instructions before use. / Arbeitsanleitung lesen. / Lire la fiche technique avant emploi. / Lea las instrucciones antes de usar. / Ler as instruções antes de usar. / Leggere le istruzioni prima dell'uso. / Διαβάστε τις οδηγίες πριν την χρήση.
	Keep away from heat or direct sun light. / Vor Hitze und direkter Sonneneinstrahlung schützen. / Garder à l'abri de la chaleur et de toute exposition lumineuse. / Manténgase alejado del calor o la luz solar directa. / Manter longe do calor ou luz solar directa. / Non esporre ai raggi solari. / Να φυλάσσεται μακριά από θερμότητα και άμεση επαφή με το φως του ηλίου.
	Store at: / Lagern bei: / Stocker à: / Almacene a: / Armazenar a: / Conservare a: / Αποθήκευση στους:
	Manufacturer: / Hersteller: / Fabricant: / Productor: / Fabricante: / Fabricante: / Παραγωγός:
	Caution! / Vorsicht! / Attention! / ¡Precaución! / Cuidado! / Attenzione! / Προσοχή!
<p>Symbols of the kit components see MATERIALS SUPPLIED. Die Symbole der Komponenten sind im Kapitel KOMPONENTEN DES KITS beschrieben. Voir MATERIEL FOURNI pour les symbôles des composants du kit. Símbolos de los componentes del juego de reactivos, vea MATERIALES SUMINISTRADOS. Para símbolos dos componentes do kit ver MATERIAIS FORNECIDOS. Per i simboli dei componenti del kit si veda COMPONENTI DEL KIT. Για τα σύμβολα των συστατικών του κιτ συμβουλευτείτε το ΠΑΡΕΧΟΜΕΝΑ ΥΛΙΚΑ.</p>	

IBL AFFILIATES WORLDWIDE

	IBL International GmbH Flughafenstr. 52A, D-22335 Hamburg, Germany	Tel.: + 49 (0) 40 532891 -0 Fax: -11 E-MAIL: IBL@IBL-International.com WEB: http://www.IBL-International.com
	IBL Deventer B.V. Zutphenseweg 55, NL-7418 AH Deventer, The Netherlands	Tel.: + 31 570-66 15 15 Fax: -60 73 86 E-MAIL: IBL@IBL-International.com WEB: http://www.IBL-International.com
	IBL - Transatlantic Corp. 288 Wildcat Road, Toronto, Ontario M3J 2N5	Toll free: +1 (866) 645 -6755 Tel.: +1 (416) 645 -1703 Fax: -1704 E-MAIL: IBL@IBL-Transatlantic.com WEB: http://www.IBL-Transatlantic.com

LIABILITY: Complaints will only be accepted in written and if all details of the test performance and results are included (complaint form available from IBL or supplier). Any modification of the test procedure or exchange or mixing of components of different lots could negatively affect the results. These cases invalidate any claim for replacement. Regardless, in the event of any claim, the manufacturer's liability is not to exceed the value of the test kit. Any damage caused to the kit during transportation is not subject to the liability of the manufacturer.